



2025 annual report to the Community

Allenby Gardens Primary School and Allenby Gardens Preschool

Allenby Gardens Primary School number: 0473

Allenby Gardens Preschool number: 1647

Partnership: Inner West



School principal:

Vicky Bitzios

Vicky Bitzios

Date of endorsement:

20/04/2026



Government
of South Australia
Department for Education

Context Statement

Allenby Gardens Primary School caters for students from R-6. At the time of this report, the enrolment in 2025 is 392. Allenby Gardens Primary School is classified as Category 6 on the Department for Education Index of Educational Disadvantage. At the time of this report, the school population includes 1% Aboriginal students, 11% students with disabilities, 16% students with English as an additional language or dialect (EALD) funded background, 1% children/young people in care. Further information about the school is available on the school's website (including its context statement), as well as the My School website.

Information about Allenby Gardens Preschool is available on the centres website, as well as the Australian Children's Education and Care Quality Authority (ACECQA) website.

Data Source: Department for Education data holdings from Mid census captured in AUGUST 2025.

AGM Chairperson's Report: 2025 Year in Review

2025 has been another high-impact year for the Governing Council. We have seen significant progress across our core subcommittees—particularly in the financial recovery of our school services—while continuing to invest in the school's infrastructure and community life.

Community Engagement & Fundraising

Our community events continue to be a major highlight. The inaugural School-cella Breakfast Event was a massive success, bringing parents and students onto the grounds in droves and fostering a fantastic sense of school spirit. Our fundraising efforts remained strong throughout the year; the Colour Run was a standout favourite, and the Quiz Night and Heaps Good Gin fundraiser provided vital support for school projects. We also welcomed Caitlin McDaid to the leadership team as Assistant Principal of Curriculum and Pedagogy, strengthening our focus on student outcomes.

OSHC Turnaround

Following some financial concerns mid-year, the Governing Council worked closely with leadership to implement a strategic turnaround for OSHC. Through a combination of staffing adjustments, a necessary fee restructure, and tighter cancellation policies, we have seen a dramatic shift in the service's viability. By Term 4, OSHC reported a profit increase of \$13,700, significantly reducing the yearly loss and putting us on a clear trajectory to be fully self-funded by 2026.

Canteen Operations

The Canteen remains a vital and high-performing service, recently achieving its 5th consecutive 5-star food safety rating. While we saw a small year-to-date loss due to essential infrastructure costs—specifically a new hot water tap—the service remains on track to be a viable company. This is largely thanks to our incredible volunteers, including Dave, who we recognized this year for an amazing 14 years of service. As always, maintaining a strong volunteer pool is essential to keeping the Canteen profitable and sustainable.

Infrastructure & Future Planning

We have continued to make wise investments in our facilities to meet the needs of our students:

Toilet Upgrades: Following concerns regarding hygiene and aesthetics, the Council approved \$9,000 for new epoxy flooring and plumbing works in the JP toilets.

Brand Refresh: We have finalized a new school logo and are moving toward a full webpage refresh in 2026 to modernize our communication with families.

Strategic Growth: With the support of the Way2Go program, we have secured \$13,000 to upgrade our bike rack area, promoting safe and active travel for our students.

Looking ahead, 2026 marks our Centenary year. Plans are already well underway for our 100-year celebration on 30 October 2026. We look forward to honouring our school's history while continuing to build a modern, sustainable environment for our students.

On a personal note, today marks the end of my term as Governing Council Chair. Having served two years in this role, preceded by two years as Secretary, it has been a privilege to work alongside such a dedicated group of parents, staff, and community members. I am incredibly proud of what we have achieved together for Allenby Gardens Primary School, and I leave the Council confident that the school is well-positioned for its next exciting chapter. Thank you all for your support and partnership over the last four years.

Rubina Allpress Chairperson
Allenby Gardens Primary School Governing Council

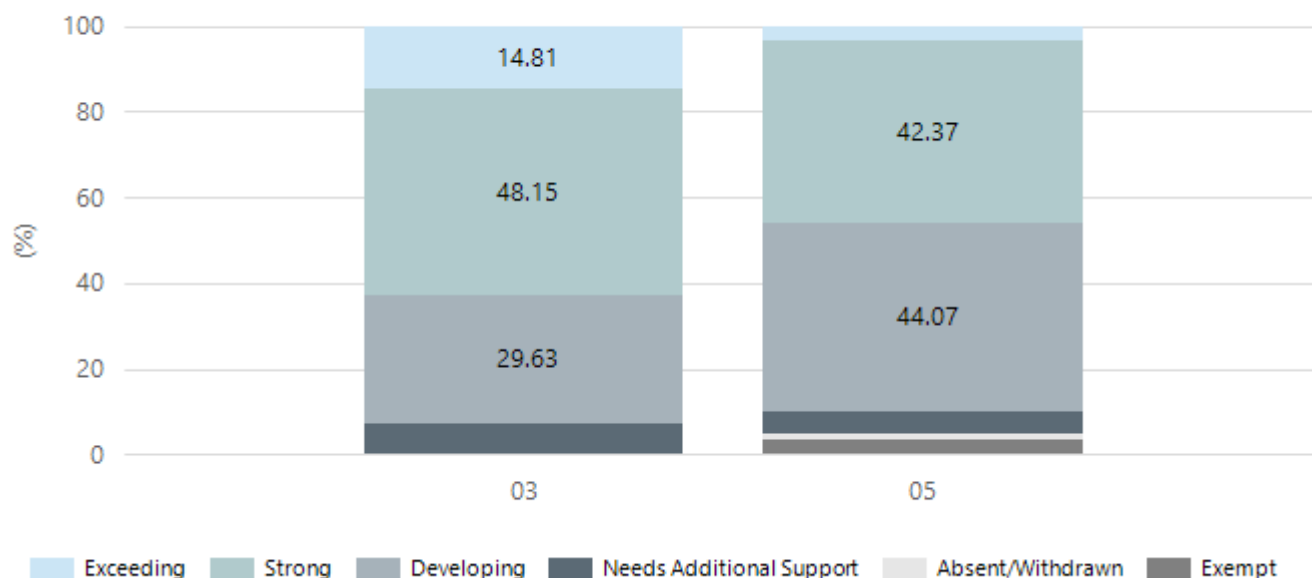
Date: 23 February 2025

Performance Summary

NAPLAN Proficiency

In 2023 the Australian Curriculum, Assessment and Reporting Authority (ACARA) - a Commonwealth Independent statutory authority - announced changes to NAPLAN performance reporting. The new approach replaces the previous numerical NAPLAN bands and the national minimum standard.

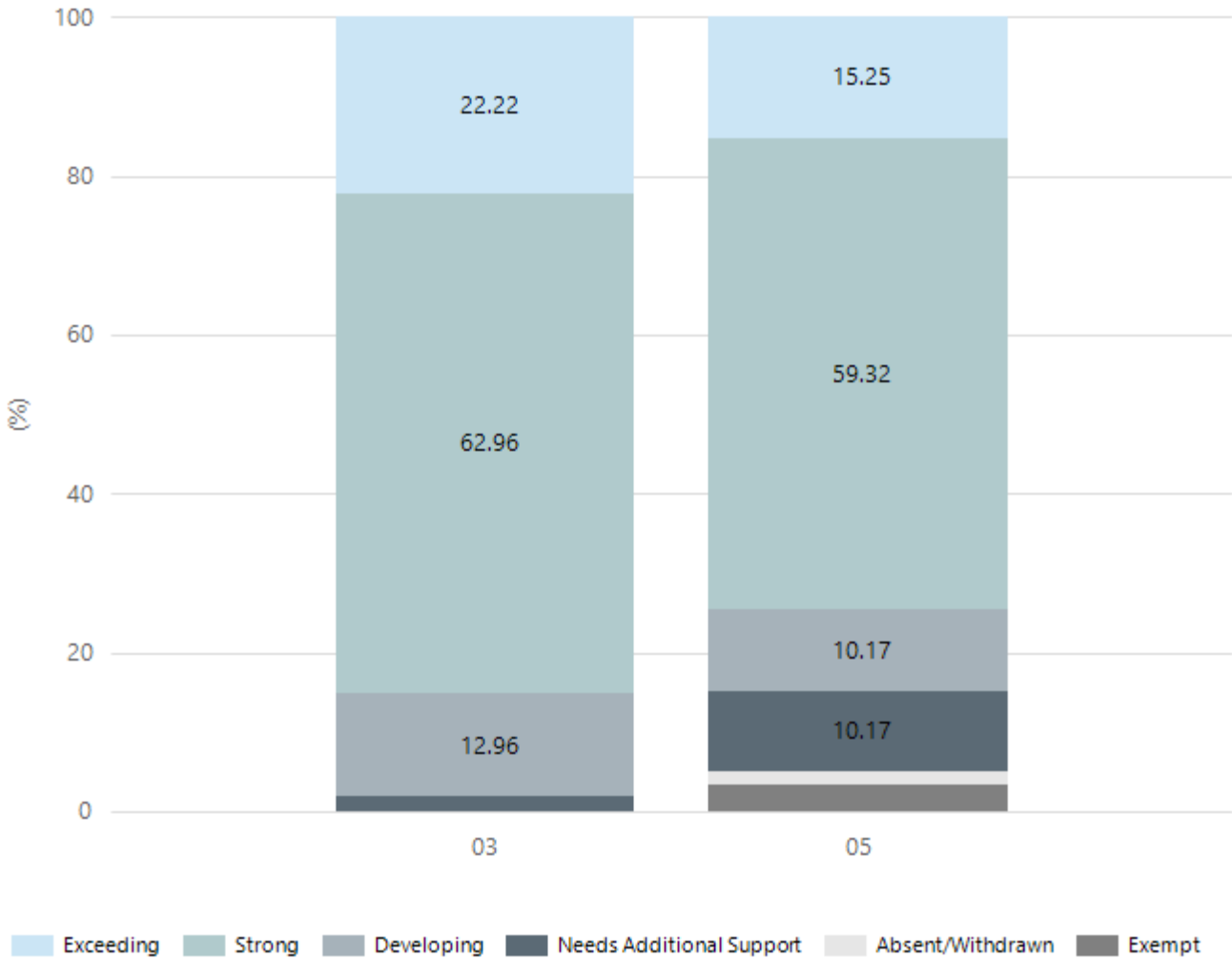
Numeracy



Year Level	03	05
Exceeding	8	2
Strong	26	25
Developing	16	26
Needs Additional Support	4	3
Absent/Withdrawn	0	1
Exempt	0	2
Total	54	59

Data Source: Department for Education Assessment Data Holdings, 2025. If there are less than 6 students who sat NAPLAN in a school, no information will be shown. If a year level has less than 6 students, that year level will not be shown in NAPLAN results.

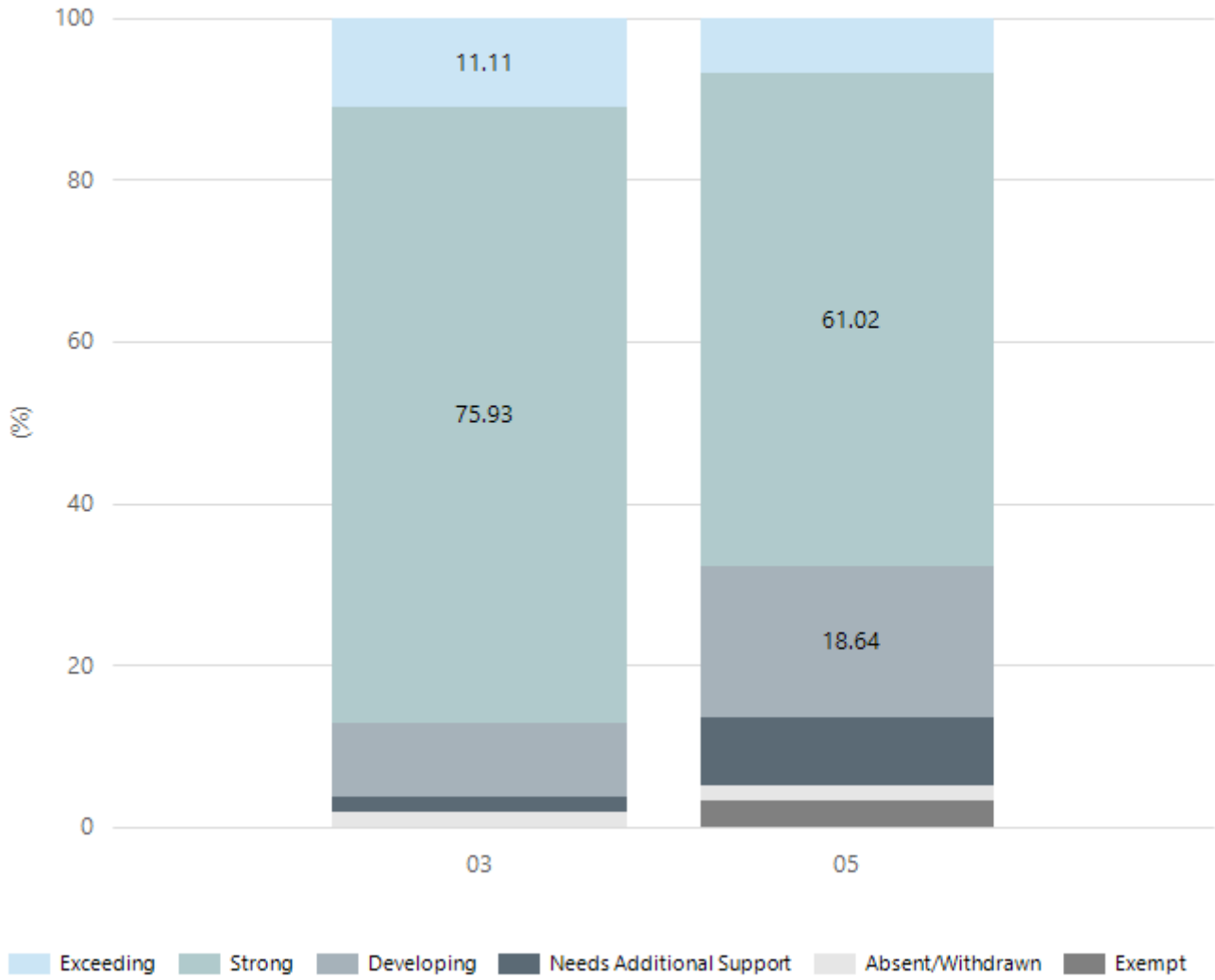
Reading



Year Level	03	05
Exceeding	12	9
Strong	34	35
Developing	7	6
Needs Additional Support	1	6
Absent/Withdrawn	0	1
Exempt	0	2
Total	54	59

Data Source: Department for Education Assessment Data Holdings, 2025. If there are less than 6 students who sat NAPLAN in a school, no information will be shown. If a year level has less than 6 students, that year level will not be shown in NAPLAN results.

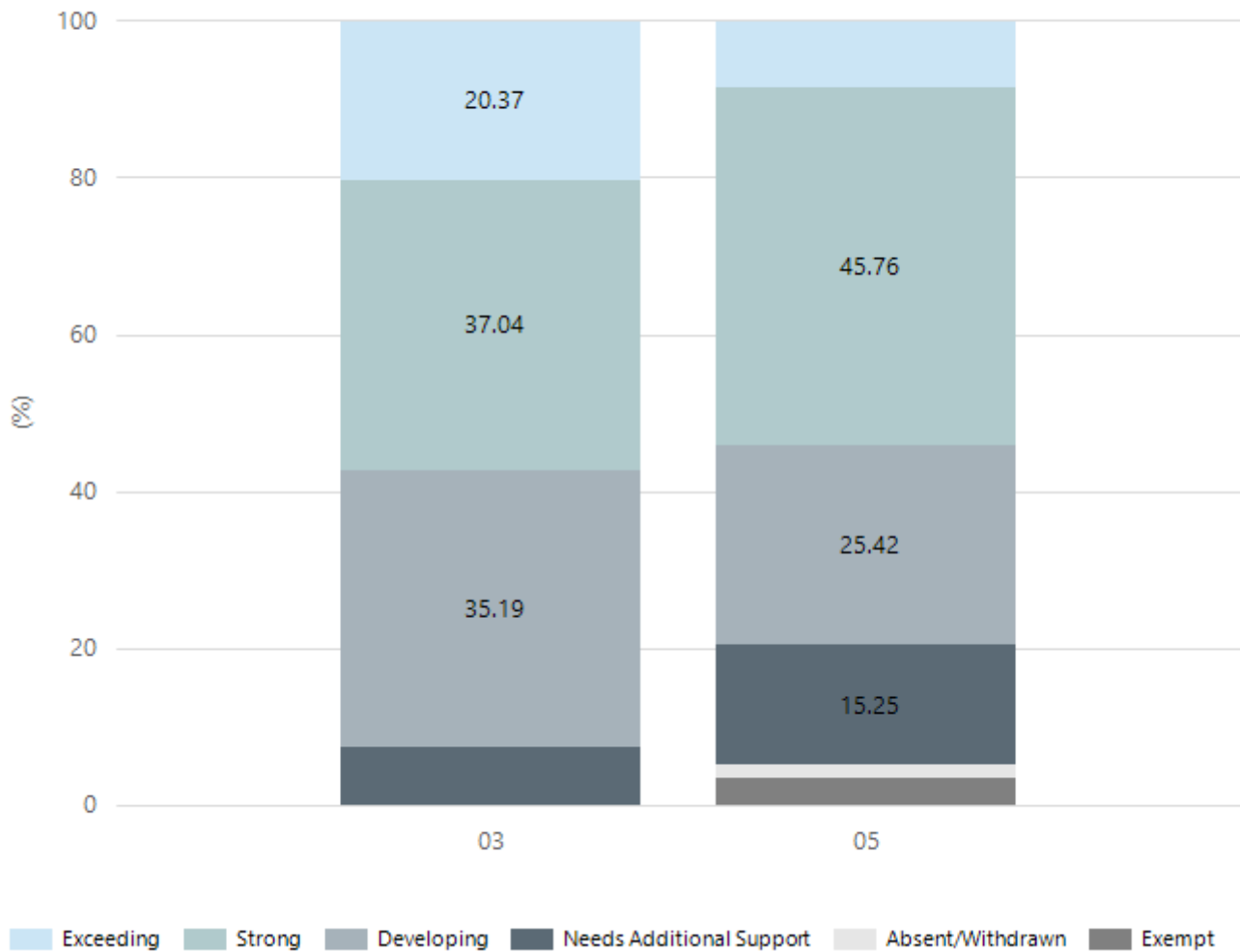
Writing



Year Level	03	05
Exceeding	6	4
Strong	41	36
Developing	5	11
Needs Additional Support	1	5
Absent/Withdrawn	1	1
Exempt	0	2
Total	54	59

Data Source: Department for Education Assessment Data Holdings, 2025. If there are less than 6 students who sat NAPLAN in a school, no information will be shown. If a year level has less than 6 students, that year level will not be shown in NAPLAN results.

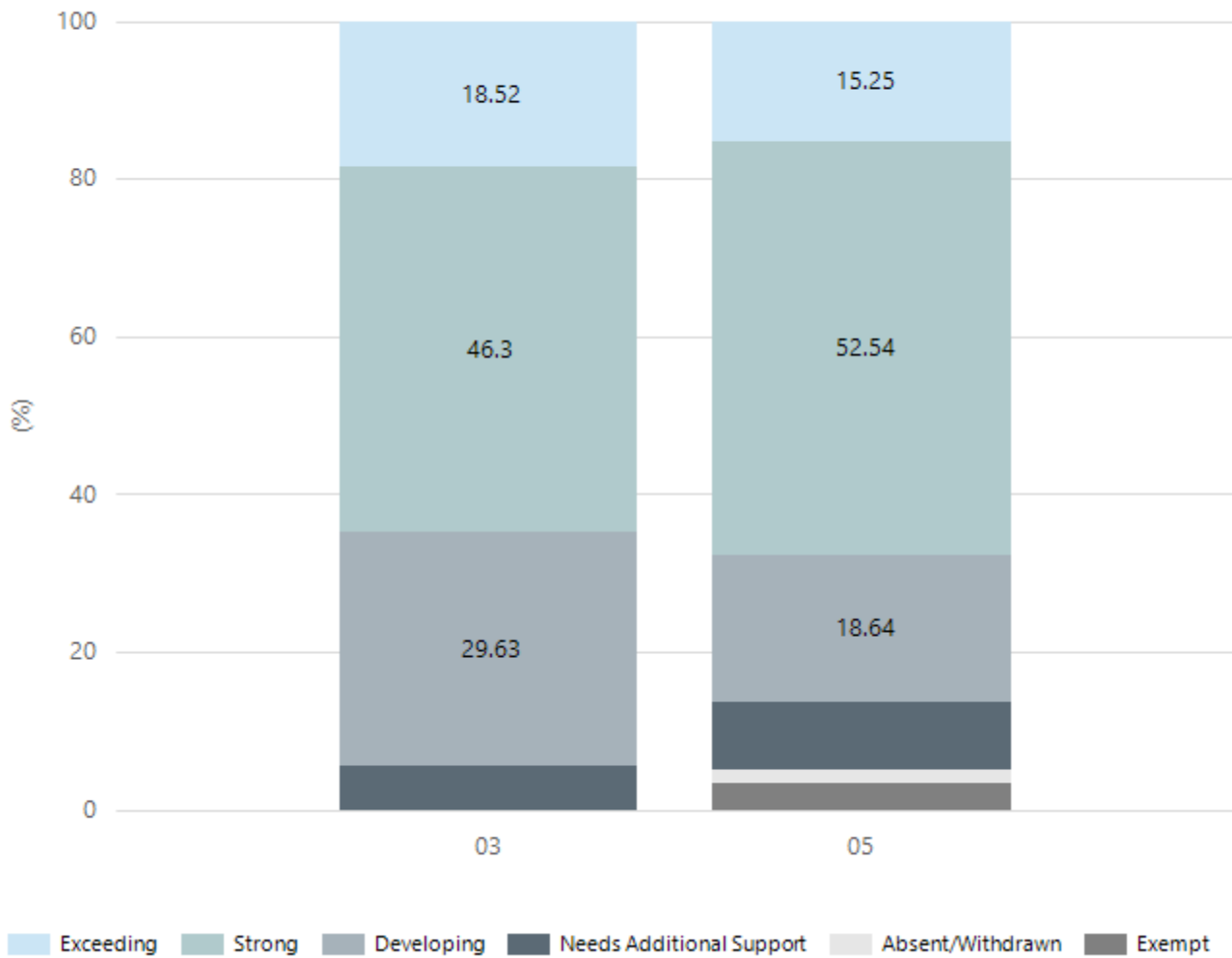
Grammar



Year Level	03	05
Exceeding	11	5
Strong	20	27
Developing	19	15
Needs Additional Support	4	9
Absent/Withdrawn	0	1
Exempt	0	2
Total	54	59

Data Source: Department for Education Assessment Data Holdings, 2025. If there are less than 6 students who sat NAPLAN in a school, no information will be shown. If a year level has less than 6 students, that year level will not be shown in NAPLAN results.

Spelling



Year Level	03	05
Exceeding	10	9
Strong	25	31
Developing	16	11
Needs Additional Support	3	5
Absent/Withdrawn	0	1
Exempt	0	2
Total	54	59

Data Source: Department for Education Assessment Data Holdings, 2025. If there are less than 6 students who sat NAPLAN in a school, no information will be shown. If a year level has less than 6 students, that year level will not be shown in NAPLAN results.

Preschool Attendance

	Term 1	Term 3
2022 centre	77.6%	80.4%
2023 centre	87.6%	88.6%
2024 centre	88.6%	79.7%
2025 centre	80.3%	80.3%

Based on preschool sessions attended during a two-week reference period in Term 1 and Term 3. The table represents the proportion of hours attended out of total hours enrolled (booked). Data Source: Department for Education attendance data.

School Attendance

Year Level	2023	2024	2025
Reception	89.4%	87.4%	92.0%
Year 01	91.5%	89.9%	88.9%
Year 02	88.5%	92.1%	90.9%
Year 03	91.3%	87.9%	93.2%
Year 04	90.8%	90.0%	90.3%
Year 05	88.6%	87.6%	91.7%
Year 06	87.5%	86.5%	88.3%
Primary Other	75.0%		
Total	89.6%	88.8%	90.9%

Data Source: Department for Education Attendance Data, Semester 1 Report 2025. A blank cell indicates there were no students enrolled. 'Primary Other' includes students enrolled in specialised education options. 'Secondary Other' includes students who have already spent a year at Year 12 and elected to undertake further study at Year 12.

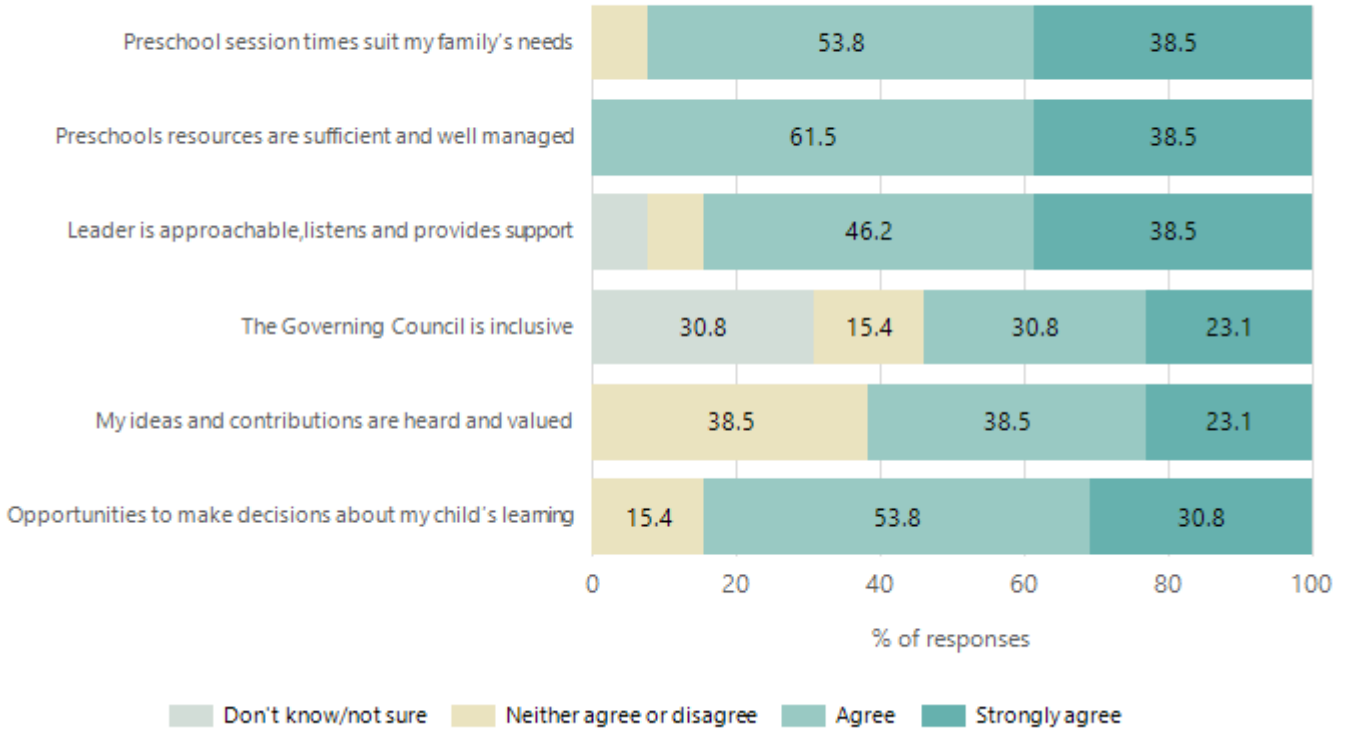
Attendance Comment

In South Australia, preschool attendance is not compulsory, but it is strongly encouraged. Preschool gives children the best opportunity to develop skills, which prepare them for school. These benefits include establishing positive routines and habits, friendships and connections as well as developing communication, problem-solving and creative skills.

In South Australia, all children and young people must be in school from 6 years to 16 years old. They must attend a government or non-government school full time. From age 16 to 17 however, young people must attend school or an approved learning program (such as an apprenticeship, traineeship, accredited course or university). Schools and parents must encourage and support students to come to school every day. Parents and caregivers must make sure their child is enrolled in a school, and attends school all day and everyday it is open, unless a child is sick or has an approved exemption. Teachers and leaders actively follow up when a student misses school, including recording all absences and non-attendance. All schools in South Australia have local attendance procedures governed under the Education and Children's Services Regulations 2020.

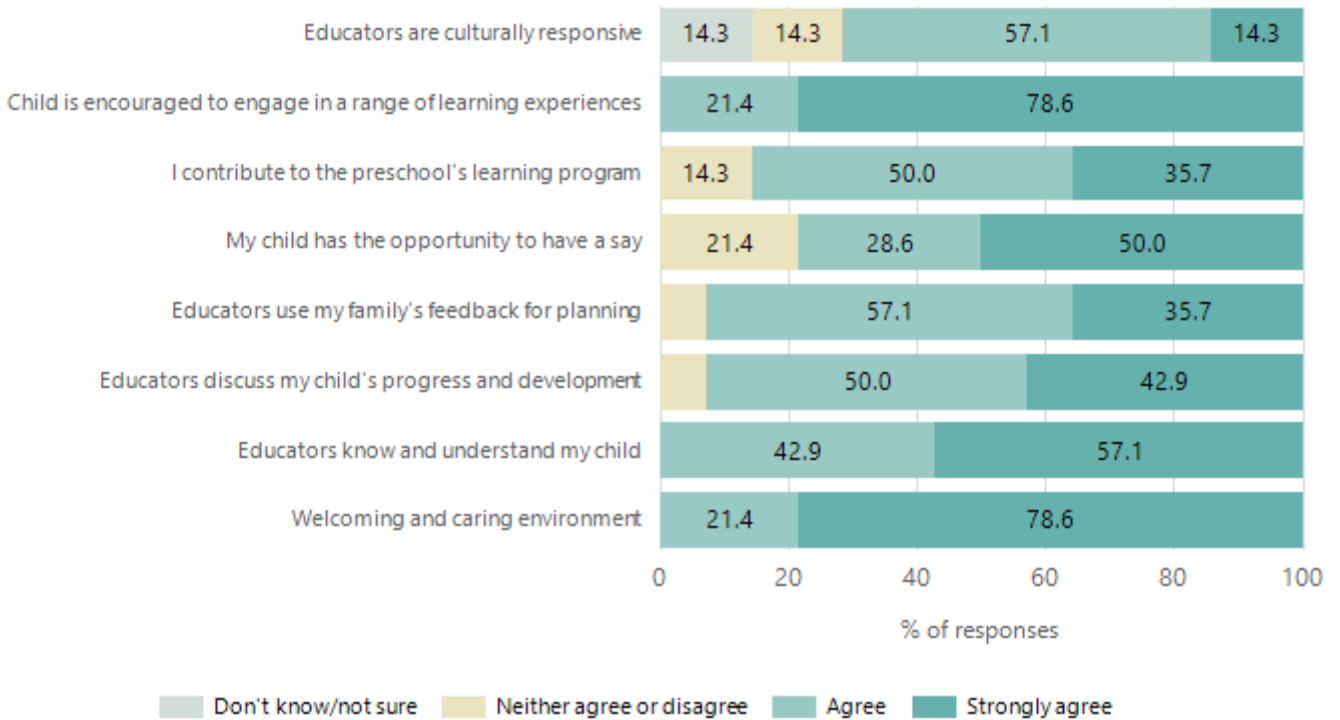
Preschool Family Opinion Survey

Governance, Leadership and Management



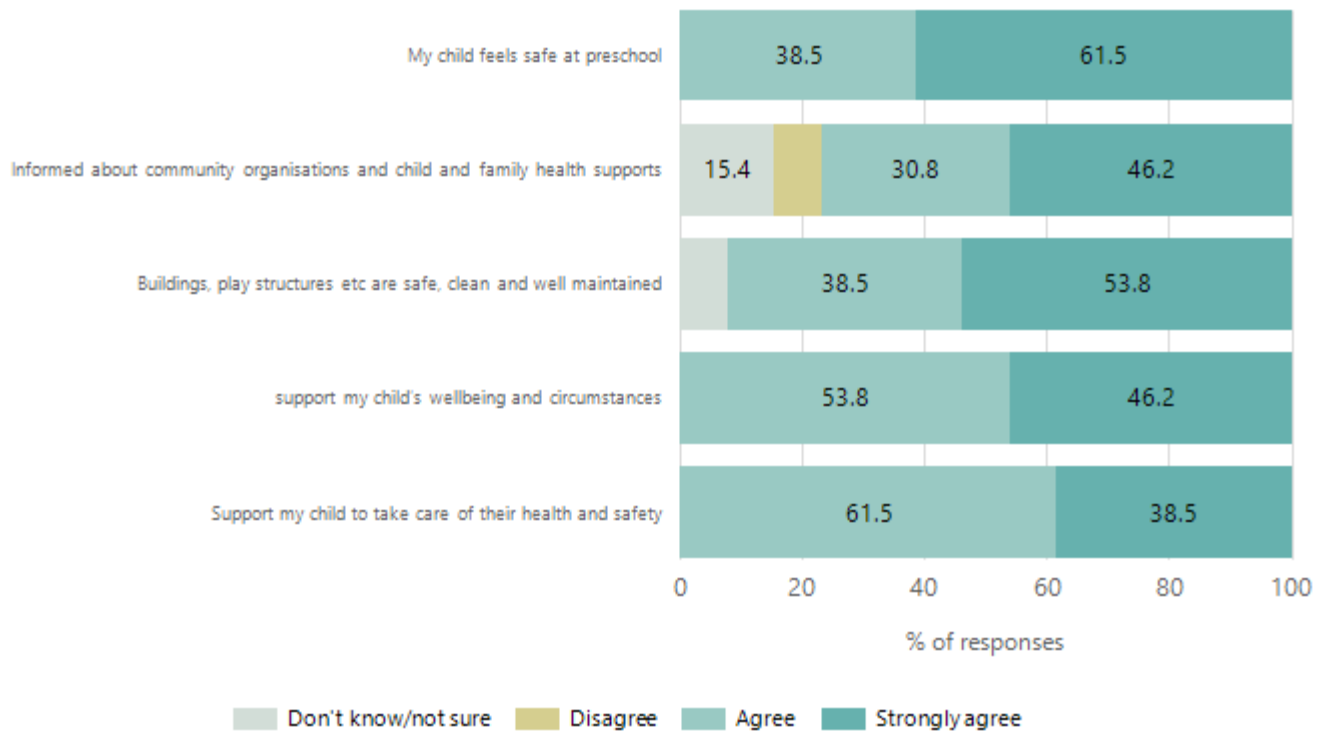
Data Source: 2025 Department for Education Preschool Family Opinions Survey, Term 3 2025.

Quality of Teaching and Learning



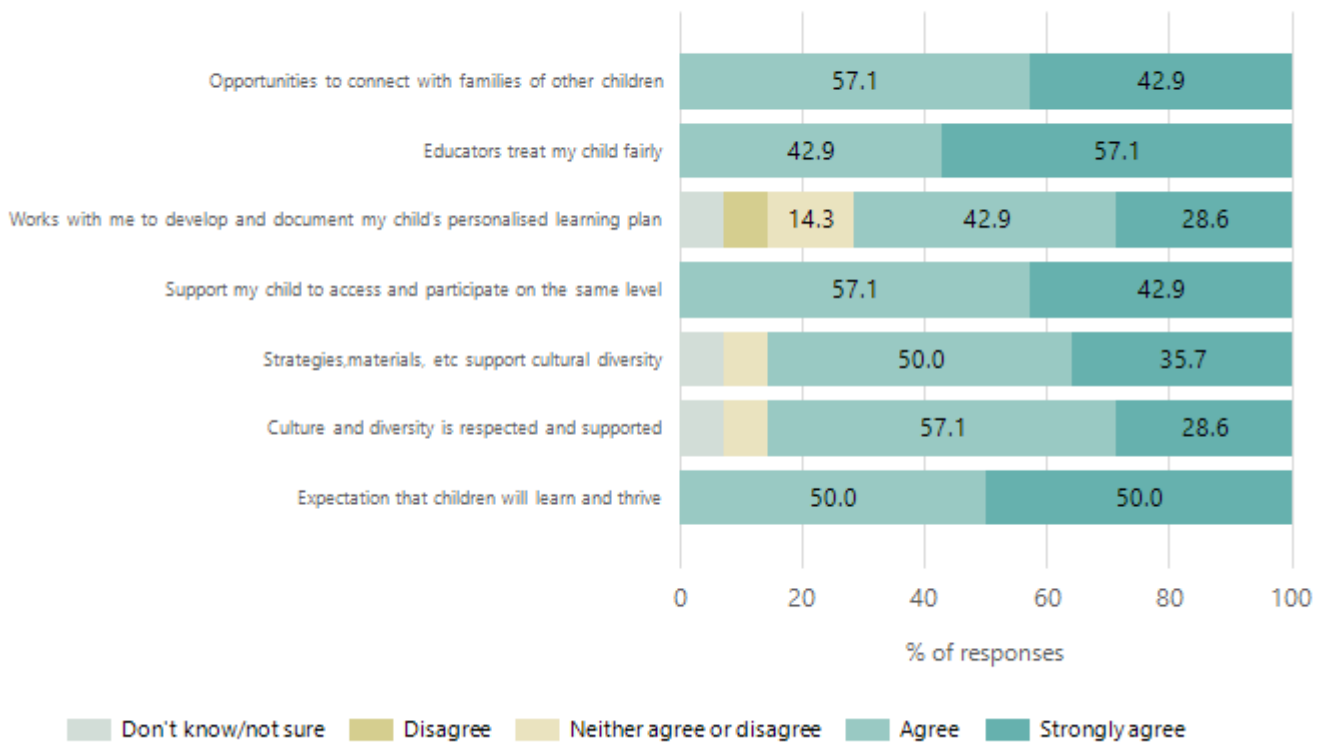
Data Source: 2025 Department for Education Preschool Family Opinions Survey, Term 3 2025.

Safety, Health and Wellbeing



Data Source: 2025 Department for Education Preschool Family Opinions Survey, Term 3 2025.

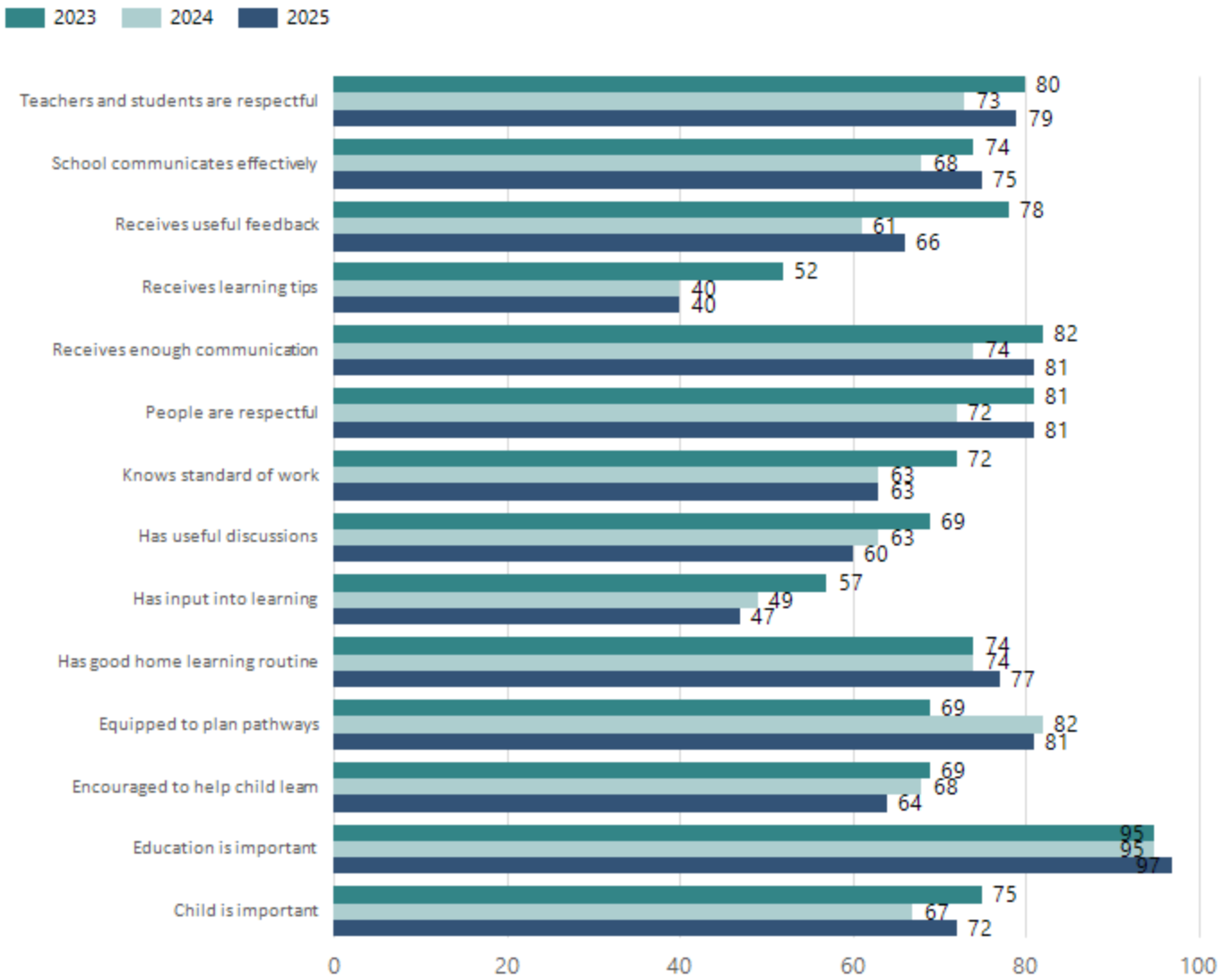
Support and Inclusion



Data Source: 2025 Department for Education Preschool Family Opinions Survey, Term 3 2025.

School Parent Opinion Survey Results

Proportion of agree/strongly agree response(%)



Data Source: 2025 Department for Education Parent Opinions Survey, Term 3 2025.

Destination Schools

Feeder Schools (Site number - Name)	2023	2024	2025
0473 - Allenby Gardens Primary School	89.9%	92.2%	76.0%
9999 - Unknown			16.0%

Note: The data is collected in term 3. It does not reflect actual schools enrolled in by existing preschool children. A blank cell indicates there was no data for students enrolled.

Data Source: Department for Education Destination Data Report, 2025.

Intended Destination

Leave Reason	Number	%
IS - INTERSTATE	2	10.0%
NG - ATTENDING NON-GOV SCHOOL IN SA	8	40.0%
TG - TRANSFERRED TO SA GOVERNMENT SCHOOL	10	50.0%

Data Source: Department for Education Destination Data Report, 2025. Data extract term 3 2025. Data shows recorded destinations for students that left the school in the previous year. Data is uploaded by schools in term 3 and may not reflect final or total figures at time of report creation.

Highest Qualifications held by the teaching workforce and workforce composition

All teachers at this school are qualified and registered with the SA Teachers Registration Board.

Qualification Level	Number of Qualifications
Bachelor's degrees or Diplomas	27
Postgraduate Qualifications	8

Data Source: Data extracted from Mandatory Workforce Information Collections as on the last pay date of June 2025. As self-reported by staff in the system.

Please note: Data includes staff who are Actively employed and on extended paid leave. Please note only the highest qualification of the Teaching staff is reported. Excludes any number of other certifications earned.

Workforce composition including indigenous staff

	Teaching Staff		Non-Teaching Staff	
	Indigenous	Non-Indigenous	Indigenous	Non-Indigenous
Full-Time Equivalents	0.0	28.5	0.0	16.1
Persons	0.0	35.0	0.0	27.0

Data Source: Data extracted from Mandatory Workforce Information Collection as on the last pay date of June 2025.

Please note: Data includes staff who are actively employed and on extended paid leave. "Indigenous category" is self-reported by staff in the system.

Financial Statement

Funding Source	Amount
Grants: State	\$5,506,771.35
Grants: Commonwealth	\$ 9,450
Parent Contributions	\$139,050.98
Fund Raising	\$36,305.64
Other	\$42,870.66

Data Source: School supplied data.